

RENCANA PELAKSANAAN PEMBELAJARAN DALAM JARINGAN
Nomor 02
PERSIAPAN UTBK : PENDALAMAN TEKS TENTANG PANDEMI COVID-19

A. TUJUAN PEMBELAJARAN

Melalui pertanyaan yang disajikan dalam Tugas Kelas pada Google Classroom bertajuk ENGLISH XII Persiapan UTBK disertai tayangan cuplikan teks dan tayangan video tentang Pandemi *COVID-19*, peserta didik dapat:

1. Menentukan jenis teks dari cuplikan teks sebanyak dua halaman dari laman <https://www.who.int/emergencies/diseases/novel-coronavirus-2019/situation-reports> dengan tepat dan disertai alasan-alasannya;
2. Menyimpulkan jenis teks yang digunakan dalam tayangan dari laman Youtube <https://www.youtube.com/watch?v=JKpVMivbTfg> dengan tepat dan disertai alasan-alasannya
3. Membedakan teks *explanation* dari teks *procedure* dan menyimpulkan jenis teks yang digunakan dalam tayangan dari laman <https://www.msn.com/en-us/video/other/how-social-distancing-can-slow-coronavirus/vi-BB117ocF> dengan tepat dan disertai alasan-alasannya.

B. LANGKAH PEMBELAJARAN

Pendahuluan

Peserta didik membuka ketiga tautan tayangan dalam Tugas Kelas, lalu mempelajari isi ketiga tayangan dengan seksama

Inti

- Peserta didik menjawab pertanyaan dalam tugas menentukan jenis teks dari cuplikan teks sebanyak dua halaman dari laman <https://www.who.int/emergencies/diseases/novel-coronavirus-2019/situation-reports> dengan tepat dan disertai alasan-alasannya;
- Peserta didik menjawab pertanyaan dalam tugas menyimpulkan jenis teks yang digunakan dalam tayangan dari laman Youtube <https://www.youtube.com/watch?v=JKpVMivbTfg> dengan tepat dan disertai alasan-alasannya;
- Peserta didik menjawab pertanyaan dalam tugas membedakan teks *explanation* dari teks *procedure* dan menyimpulkan jenis teks yang digunakan dalam tayangan dari laman <https://www.msn.com/en-us/video/other/how-social-distancing-can-slow-coronavirus/vi-BB117ocF> dengan tepat dan disertai alasan-alasannya.

Penutup

Peserta didik mengirim ketiga jawaban di Tugas Kelas pada Google Classroom :
ENGLISH XII Persiapan UTBK

C. PENILAIAN

1. Jenis : Tes
2. Bentuk : 2 butir soal isian singkat, 1 soal pilihan
3. Uraian Soal : Lihat Lampiran RPP Online Nomor 2!
4. Penskoran : Skor 100 jika jawaban sesuai dengan kunci
Skor 75 jika jawaban mendekati kunci jawaban
Skor 10 jika jawaban tidak sesuai/tidak mendekati kunci jawaban

5. Kunci Jawaban (tentatif) :

Pertanyaan Pertama

Report Text, it tells about the facts on COVID-19 and its prevention.

Pertanyaan Kedua

Combination of Report Text and Explanation, it tells about the facts on COVID-19 with the story how it infects people.

Pertanyaan Ketiga

Mostly Procedure text, it tells us about how social distancing can be done by people.

LAMPIRAN RPP ONLINE NOMOR 2

PERTANYAAN DALAM TUGAS KELAS

(dapat diakses di

<https://classroom.google.com/c/NzlxNDY3NjM2NVpa/sa/NTY1NzI2NTgwNzVa/details> untuk

Pertanyaan Pertama,

<https://classroom.google.com/c/NzlxNDY3NjM2NVpa/sa/NTY1ODI3OTQ2Mzha/details> untuk

Pertanyaan Kedua, dan

<https://classroom.google.com/c/NzlxNDY3NjM2NVpa/mc/NTY1ODQ1NDY0Mzha/details> untuk

Pertanyaan Ketiga)

Pertanyaan Pertama



Tenggat: 11 Apr 23.59

Do you know the kind of the following two pages?

100 poin



Arman Tirtajaya 26 Mar (Diedit 30 Mar)

Observe carefully the two pages from <https://www.who.int/emergencies/diseases/novel-coronavirus-2019/situation-reports> attached below! Based on your knowledge, try to analyze the kind of text! Give the reasons why you can name it! You can read it completely from the link attachment!



Page 1.JPG
Gambar



Page 2.JPG
Gambar



Link
<https://www.who.int/docs/default...>

Komentar kelas



Tambahkan komentar kelas...



Pertanyaan Kedua



Tenggat: 11 Apr 23.59

100 poin

Watch the video and try to conclude the name of the text spoken by the narrator!
What can you recommend after watching the video?

Arman Tirtajaya 26 Mar (Diedit 30 Mar)

You should open the link below and decide the kind of text! Please watch the video until the end!



COVID-19 (Coronavirus Dise...
Video YouTube 13 menit

Komentar kelas



Tambahkan komentar kelas...



Pertanyaan Ketiga



Tenggat: 11 Apr 23.59

100 poin

Watch the video and choose the correct name of the text!

Arman Tirtajaya 26 Mar (Diedit 30 Mar)

Please enjoy the video and try to differentiate between the explanation and procedure text! Then, decide the name of text you have watched!



How 'Social Distancing' Can ...
<https://www.msn.com/en-us/vid...>

- Explanation
- Procedure

Komentar kelas



Tambahkan komentar kelas...



TAYANGAN PADA PERTANYAAN

Pertanyaan Pertama

SUBJECT IN FOCUS: Infodemics Management – Enabling Safer Workplaces in a time of COVID-19

WHO's Information Network for Epidemics (EPI-WIN) website: www.who.int/epi-win was launched on 24 March and gives people access to timely, accurate, and easy-to-understand advice and information from trusted sources on the evolving COVID-19 pandemic, translating scientific information to actionable information. EPI-WIN's two-way communication network addresses key information needs while rebutting misinformation and fighting infodemics, which spread misinformation, create confusion and distrust among people and hamper an effective response. The EPI-WIN website is aimed at a wide range of audiences including

- Individuals and communities
- the health sector,
- countries,
- the travel and tourism sector,
- faith-based organizations and faith leaders,
- large event organizers, and
- employers and employees.

Of the world's population of around 8 billion, over 3 billion are in paid employment. National and international trade unions represent the rights and welfare of workers not only in relation to employment but also often in relation to their families and communities and are regarded as trusted sources of information and advice by their members.

EPI-WIN is engaging closely with employers and workers through different entities and organizations that serve as amplifiers with the capacity to reach vast numbers of people with life-saving information and guidance. The International Organization of Employers alone reaches 50 million businesses in 150 countries. Among several other entities and organizations, EPI-WIN has strong links with trade unions through the International Labour Organization (ILO)'s the Bureau of Workers' Activities (ACTRAV), the International Trade Union Confederation and the global sectoral unions, reaching over 210 million workers and their families in 153 countries.

To best respond to the need for timely information of these different audiences, EPI-WIN conducts regular calls with the different sectors. On March 23rd, WHO and the International Occupational Medicine Society Collaboration (IOMSC) conducted a webinar on "Occupational Health Measures in the Preparedness and Response to COVID19 in the Workplace." Approximately 225 participants registered for the webinar including IOMSC Occupational Medical Society members as well as other Occupational Medical Society physician leaders from around the world. Participant questions were notably around the themes of: workplace transmission of COVID-19; the use of masks and other personal protective equipment (PPE) by healthcare and other public-facing workers; the use of rapid tests for COVID-19 to screen workers in workplaces; "Return to Work" guidance; and mental health and psychosocial impacts in workplaces, in particular health facilities.

Two additional webinars are scheduled for Thursday, 26 March the first with the European Federation of Public Service Unions (EPSU), representing 8 million workers, and the second a videoconference with the International Organization of Employers (IOE): "Summit on the collaboration of the private sector with health systems in emergency situations."

Employers and employees have a crucial role to play in stopping COVID-19 and reducing the impact of the disease on society. A key area of EPI-WIN's work focuses on how to create a COVID-safe workplace and prevent transmission of the disease between employees through the following measures:

Preventing transmission of COVID-19 between employees

- Implement remote work practices (tele-working)
- Social distancing measures in the workplace when on-site presence is required (at least 1 metre)

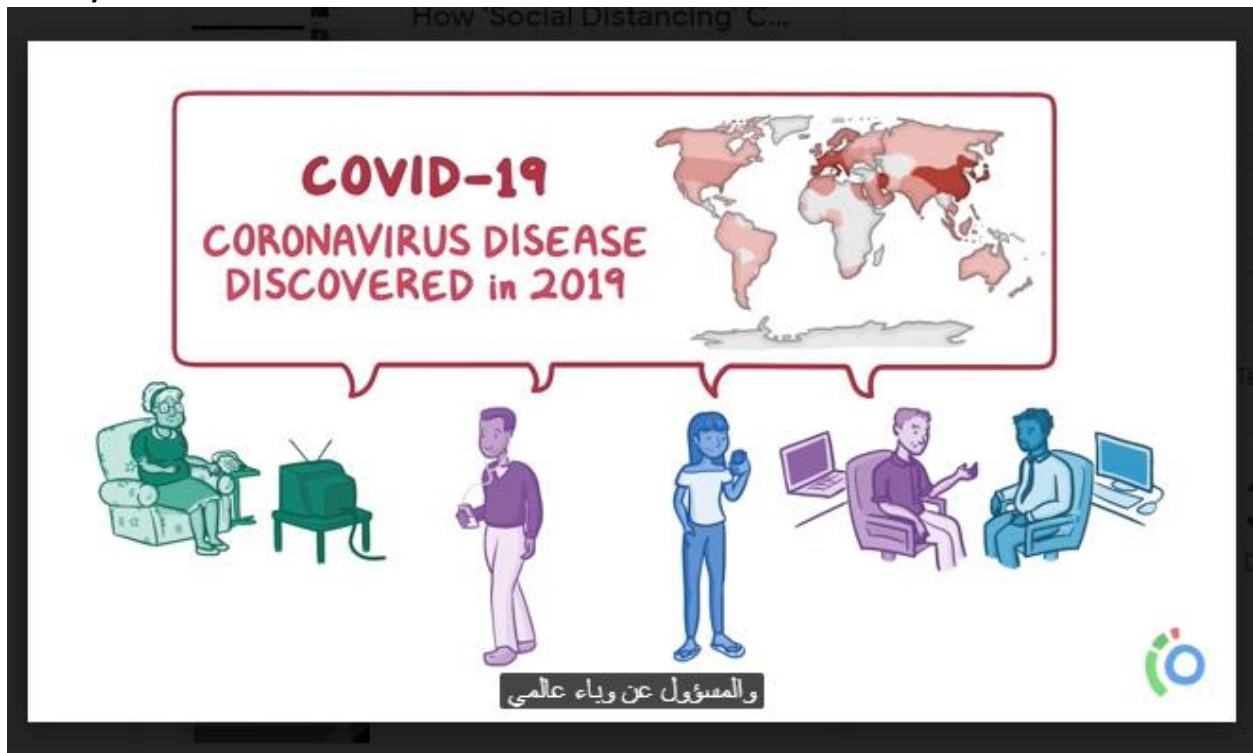
-
- Hold fewer in-person meetings
 - Restrict the number of visitors entering the workplace
 - Limit travel beyond non-essential travel
 - Ensure people with symptoms or with family members with symptoms self-quarantine for 14 days
 - Check the body temperature of employees daily so that employees with fever don't come to work
 - Facilitate access to reliable information for employees to promote understanding of the disease and its symptoms and the personal preventative measures (respiratory etiquette, hand washing, self-isolation if sick)
 - Check and follow the advice from the authorities in the community before holding a meeting or event; follow all necessary precautions, protective and self-isolation measures, should a meeting go ahead.

Maintain a safe and healthy work environment

- Develop a business continuity plan
- Develop a contingency and business continuity plan for an outbreak in the communities where your business operates and for when your employees return to work during or after COVID-19 according to national and local health authorities.
- Promote regular and thorough hand washing by employees, contractors and customers, as well as good respiratory hygiene.
- Clean workspaces frequently with disinfectant including high risk areas/space (e.g. door handle, reception counter, elevators, disinfection of working stations of COVID-19 cases)
- Provide alcohol-based gel or washing hands stations
- Establish a reporting system for any cases among employees
- Establish a system to quarantine close contacts of a suspect or confirmed case among the employees
- Ensure good ventilation
- Develop a food delivery system that reduces contacts with food deliverers and avoid employee lines
- Ensure psycho-social support of employees during the pandemic. Incorporate mental health resources into human resources policies. Your employees may be suffering from emotional distress during this period; and may also suffer distress when experiencing changes like returning to work.

Halaman Kedua

Pertanyaan Kedua



Cuplikan tayangan dalam <https://youtu.be/JKpVMivbTfg> ; durasi 13 menit 22 detik

Pertanyaan Ketiga



Cuplikan tayangan dalam <https://www.msn.com/en-us/video/other/how-social-distancing-can-slow-coronavirus/vi-BB17ocF> ; durasi 2 menit 33 detik