

The background features a repeating pattern of various tropical leaves in shades of yellow, teal, orange, and dark blue, set against a light pink background. The leaves are stylized with bold outlines and some have holes or distinct vein patterns.

WELCOME TO ENGLISH CLASS

WITH MS. ARTILIANA



AWESOME WORDS

*“Every new day is
another chance to
change your life.”*

REVIEW THE PREVIOUS LESSON

- Explain about the definition and social function of greeting card !
- Explain about the expression of greeting card especially in happy occasion !

INTRODUCTION
(APPERCEPTION)

QUESTIONS RELATE TO THE NEW MATERIAL

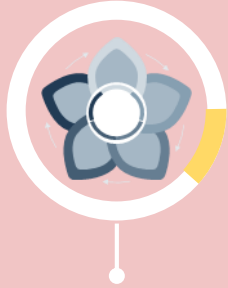
- a. Have you ever seen a bouquet of flower with a card sticks on it that someone brings to visit her sick friend ?
- b. What messages does she write on a card ?

LEARNING OBJECTIVE

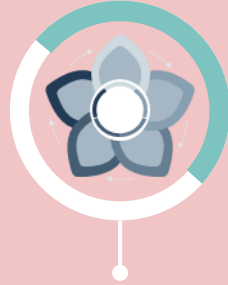
Melalui diskusi kelompok peserta didik dapat mengkritik, memutuskan, mengkreasikan dan menciptakan beberapa teks dalam bentuk greeting card untuk memberi dan meminta informasi terkait dengan hari – hari spesial sesuai konteks penggunaannya dengan capaian nilai 70.

INTRODUCTION
(APPERCEPTION)

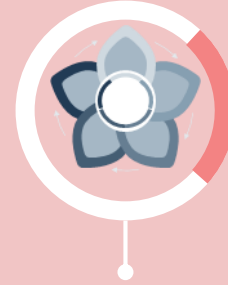
TODAY'S ACTIVITIES



PRE-TEST



**GROUP
DISCUSSION**



POST-TEST

INTRODUCTION
(PRE-TEST)

PRE - TEST

• *to martia williams* •

I KNOW YOU'VE BEEN UNDER THE WEATHER

***I hope you get in the pink of
your health. Please get well
soon. Take good care, I am
here to pray.***

• *from felicia phillips* •



INTRODUCTION
(PRE-TEST)


PRE - TEST



Answer the questions below !

- What can the phrases "under the weather" and "in the pink of your health" be replaced with ?
- Why does Felicia Phillips send the greeting card to Martia Williams ?
- How does Felicia Phillips send the greeting card to Martia Williams ?
- Explain about the lexicogrammatical features based on the greeting card above !

MAIN ACTIVITY
(LITERATION)



GET BETTER SOON

*Dear Lea,
I heard you are feeling unwell.*

Love, Amira

We can't wait to see you at the next tea party.
Rest well and take care!



SINCERELY, ADORA

I'm sorry for your loss

DEAR MR. AND MRS. DELAMAR,
I hope that you find the strength to
get through these trying times.

MAIN ACTIVITY
(CRITICAL THINKING)



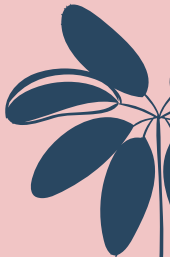
A. Why aren't the generic structures appropriate with the correct ones ?

B. How can we arrange the good arrangement of the jumbled generic structures ?

C. What are the similarities and the differences between these two greeting cards ?

MAIN ACTIVITY
(DATA COLLECTION,
COLLABORATION, ASSOCIATION
AND CRITICAL THINKING)

NUMBER	THEME OF GREETING CARD	CRITIC	GENERIC STRUCTURE



MAIN ACTIVITY
(COMMUNICATION AND
CREATIVITY)



Example :

- Arrange the jumbled generic structures in a good order !
- Explain about the social function and lexicogrammatical features !

MAIN ACTIVITY
(COMMUNICATION AND
CREATIVITY)

Answer :

a. Generic Structure

Sender : The Stewarts

Receiver : Thomas

Body :

- * with heartfelt sympathy
- * we are praying with you
- * we are truly sorry for your loss
- * please don't hesitate to reach out

b. Lexicogrammatical Features

Simple Present Tense :

- * we are truly sorry for your loss
- * please don't hesitate to reach out

Expression of Greeting Card :

- * with heartfelt sympathy
- * we are praying with you
- * we are truly sorry for your loss
- * please don't hesitate to reach out

Pronoun : We, You, Your



ASSIGNMENT



<https://forms.gle/MZ8k3CmUWhoMRFPE6>

And create your own greeting card especially in sad occasion then send it to my WhatsApp





THANKS!

See you on our next
meeting !

